

Gateway to Imaging

Through its participation in the Euro-Biolmaging ERIC network, Czech-Biolmaging provides access to cutting-edge imaging expertise across Europe.

With 3 national nodes, we offer seamless access for researchers everywhere.

Choose the route that fits your needs:

Czech-Biolmaging Access – straightforward national access for all users

Euro-Biolmaging Access – unified international access through the European infrastructure

Collaborative Projects – partner with us on joint research

Get to the Funding

Discover how to secure support for your innovative imaging project at the Czech-Biolmaging facilities.



Get Open Access

Learn how to easily access state-of-the-art bioimaging technologies across the Czech Republic.



Get to the Courses

Explore upcoming training opportunities to boost your skills in biomedical imaging and image analysis.



Contact Information

Czech-Biolmaging, National Research Infrastructure for Biological and Medical Imaging

Institute of Molecular Genetics of the
Czech Academy of Sciences
Víteňská 1083
142 20 Prague 4
Czech Republic

+420 241 063 161
info@czech-bioimaging.cz
www.czech-bioimaging.cz



National Research Infrastructure for Biological and Medical Imaging

Partners



INSTITUTE OF PHYSIOLOGY CAS

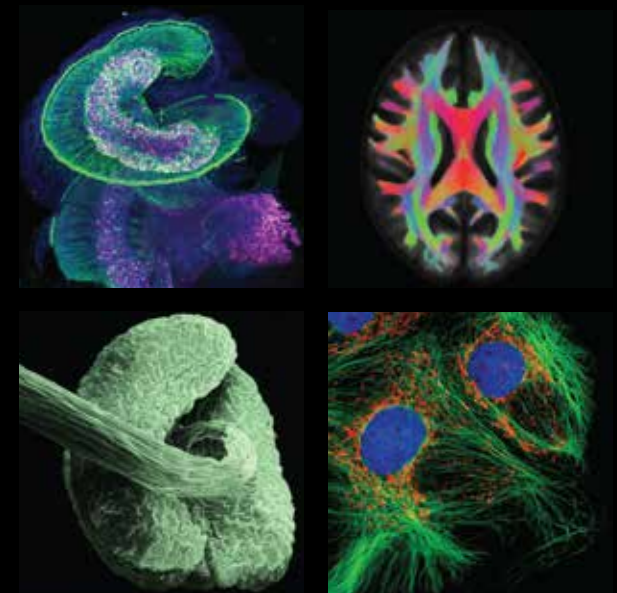
MUNI



Charles University



Czech-Biolmaging, National Research Infrastructure for Biological and Medical Imaging, is supported by the Ministry of Education, Youth and Sports, Czech Republic.



Czech-BioImaging opens the door to world-class imaging technologies and expertise. As a national research infrastructure and part of the European research landscape, we support scientists in exploring life at all levels — from molecules to whole organisms.

What we offer

- OPEN ACCESS**
to cutting-edge bioimaging instruments across scales
- EXPERT SUPPORT**
professional assistance during your visit from experimental design to data interpretation
- FUNDING**
of innovative and complex user projects performed at our Core Facilities
- COURSES**
hands-on and theory focused courses in biomedical imaging and image analysis

16 Core Facilities
10 Partner Institutions



Services and Capabilities

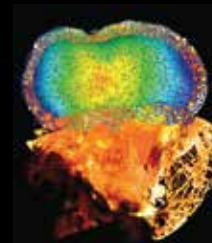
from molecules to tissues in 5 main areas

- LIGHT MICROSCOPY**
Standard & advanced fluorescence microscopy including super-resolution, label-free imaging, intravital imaging, etc.
- ELECTRON MICROSCOPY**
Advanced SEM & TEM imaging including cryo methods, tomography, analytical and volume approaches, etc.
- PLANT IMAGING**
Plant-optimised microscopy solutions designed to meet the specific demands of plant research
- HUMAN IMAGING**
3T MRI/MRS, real-time fMRI neuro-feedback, dual-fMRI, high-density EEG, combined MRI with electrophysiology, etc.
- PRE-CLINICAL IMAGING**
High-field MRI/MRS, magnetic particle imaging, PET, SPECT, CT, ultrasound, photoacoustics, in-vivo optical imaging, etc.

Image data analysis

available in all areas

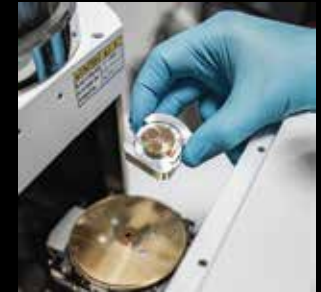
Get expert support in image data analysis — we develop workflows based on FAIR data principles aligned with the EOSC initiative, using commercial and open-source tools as well as fully customized solutions.



200+ imaging instruments
& over 120 professional staff available to you

Sample preparation

We help you prepare samples while preserving their structure and quality as the essential first step toward reliable imaging results.



Imaging & Measurements

Together, we select the most suitable imaging method for your project. Whether your focus is biological imaging or medical imaging, our experts guide you through every step — from experiment design to data acquisition.



Results & Interpretation

Our experts assist you in turning complex imaging data into meaningful results — empowering you to interpret findings and publish with confidence.

